

Manual PlanetAir 21, 29, 37



Specifications

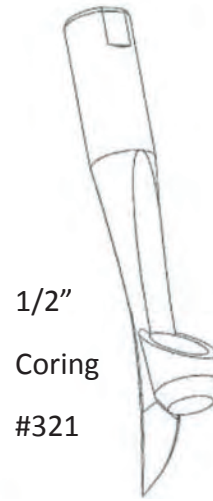
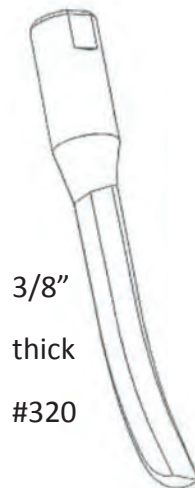
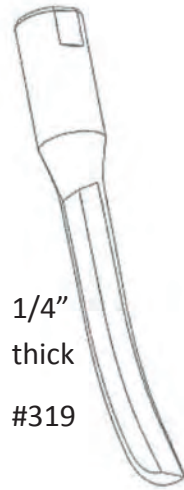
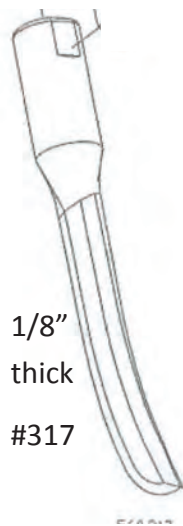
	PlanetAir 21	PlanetAir 29	PlanetAir 37
Shatter Knife Cultivation	✓	✓	✓
Holes per Hour	500,000	700,000	900,000
Number of Knives	16	22	28
Coring Tine Cultivation	✓	✓	✓
Holes per Hour	250,000	350,000	450,000
Number of Tines	9	12	15
3-Speed Transmission	✓	✓	✓
1st Speed 1.8mph. Sq Ft / hr	16,632	22,971	29,272
2nd Speed 3.0 mph Sq Ft / hr	27,720	38,285	48,787
3rd Speed 3.8 mph Sq Ft / hr	35,112	48,495	61,797
Aeration Working Width	21"	29"	37"
Weight	180 lbs	198 lbs	215 lbs
Overall Size (w/o handlebars) L x W x H	27 x 27 x 31"	27 x 35 x 31"	27 x 43 x 32"
Engine	127 cc Briggs	127 cc Briggs	208cc Briggs
Marine Grade Aluminum Construction	✓	✓	✓
6" Front and Rear Drive Rollers	✓	✓	✓
Aeration Depth 1.5" - 3" Adjustable	✓	✓	✓
Aeration Pattern 1.2" Staggered	✓	✓	✓

Warranty is a parts only warranty for one year between you the customer and PlanetAir Turf Products

Order Parts: parts@planetair.biz 877-800-8845

Repair Video: www.planetair.biz





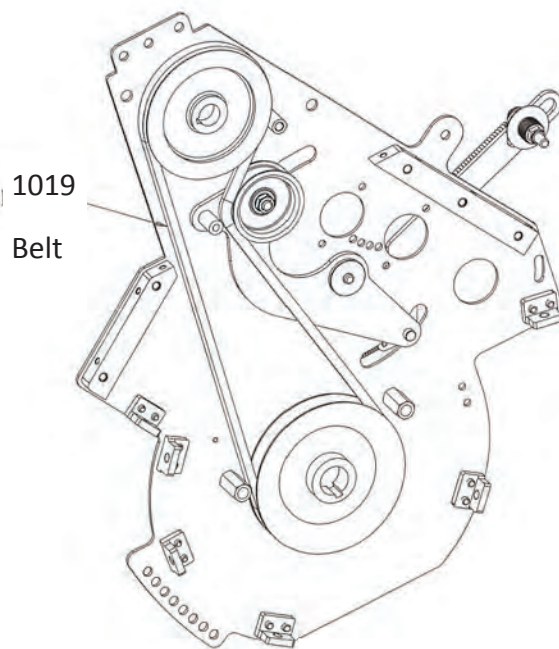
#1050 Bolt



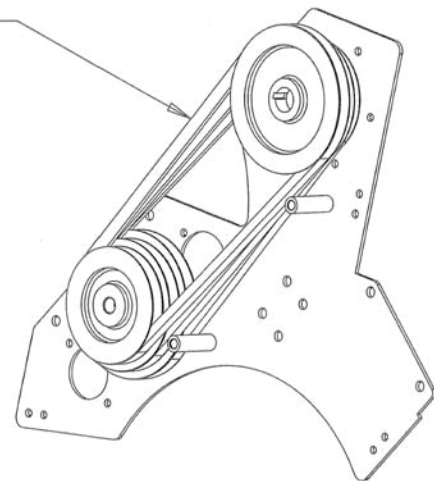
#332 Coring Knife
extension



#1054 Bolt
Used with
Extension.



1020 Belt

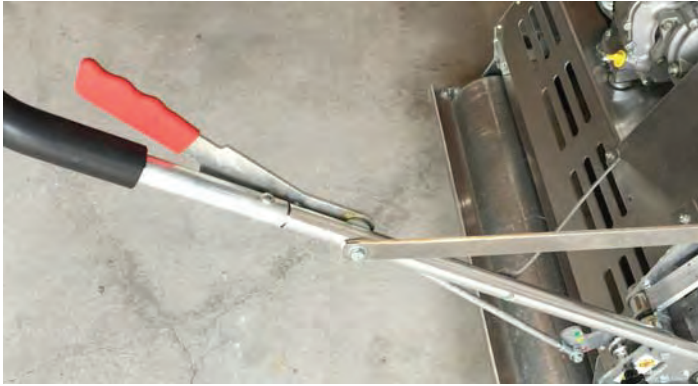


Warranty: PlanetAir Walk-behind aerators are covered by a 1 year parts only warranty between you the customer and PlanetAir. Before dis-assembly of the machine watch the repair video. This machine is made of sub assemblies to reduce repair time.

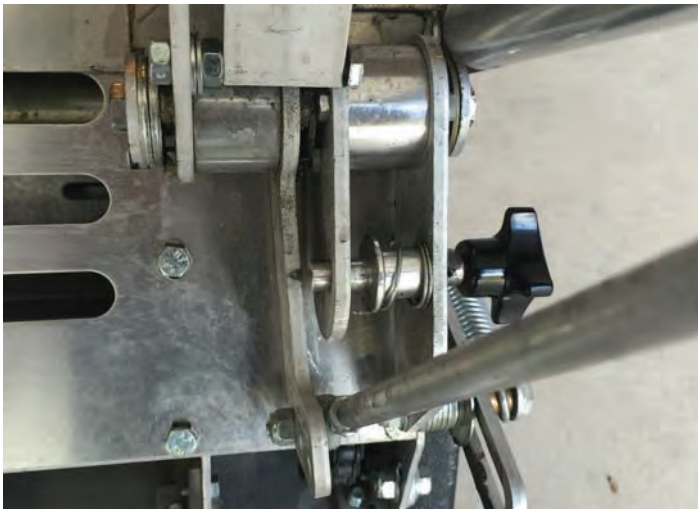
Repair Video: www.planetair.biz

Order Parts: parts@planetair.biz 877-800-8845

Attention: Aerate in each speed for 5 minutes to break-in belts.



Pull-back the red handle to engage and push-forward to stop.



Lock-out the black knob to transport the machine and lock-in to aerate.

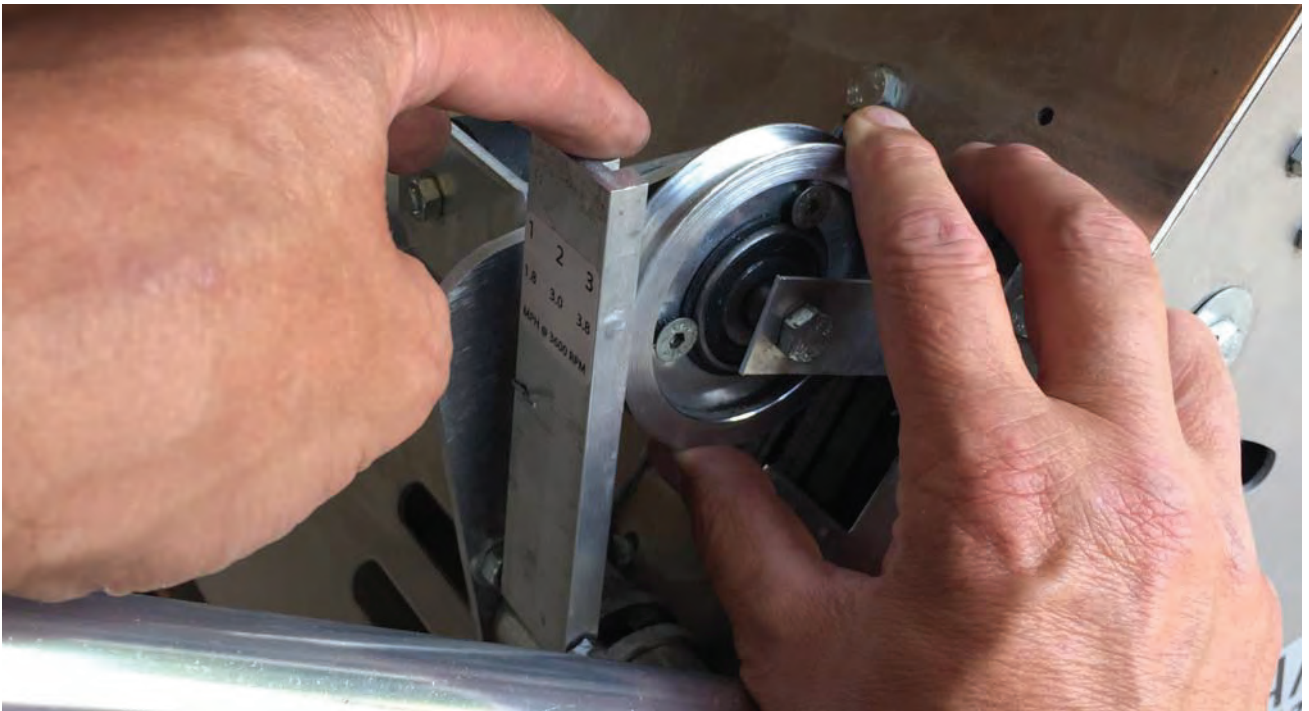
Caution: The tines may contact the ground briefly during transport operations.



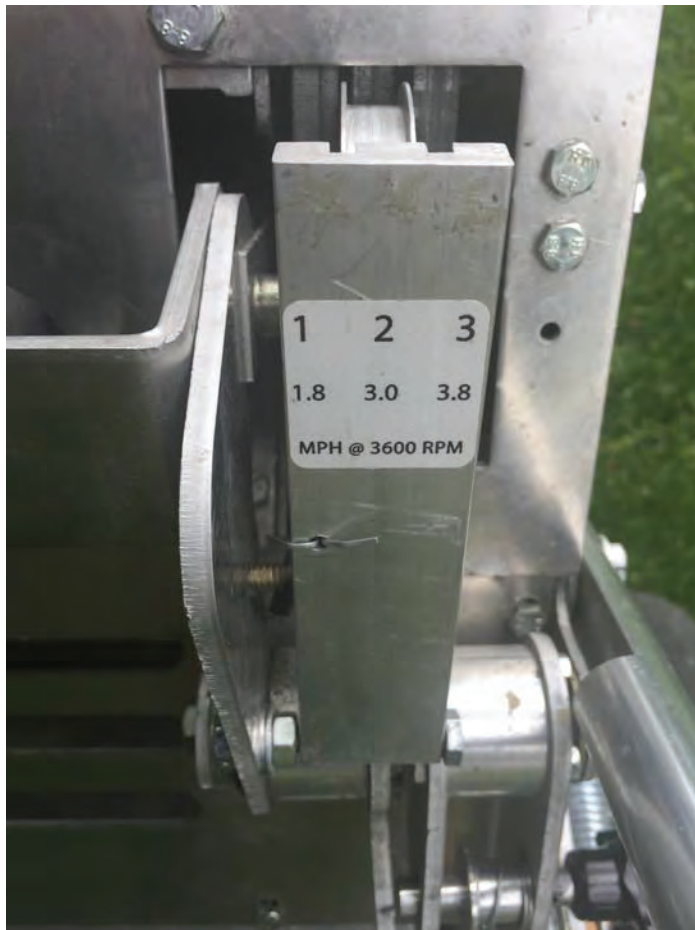
Depth Adjustment:

Remove the front bolts from the flange and loosen the rear bolts and pivot.

Attention: Aerate in each speed for 5 minutes to break-in belts.



To change speed lift the bar and slide the pulley. Pull evenly to avoid binding.

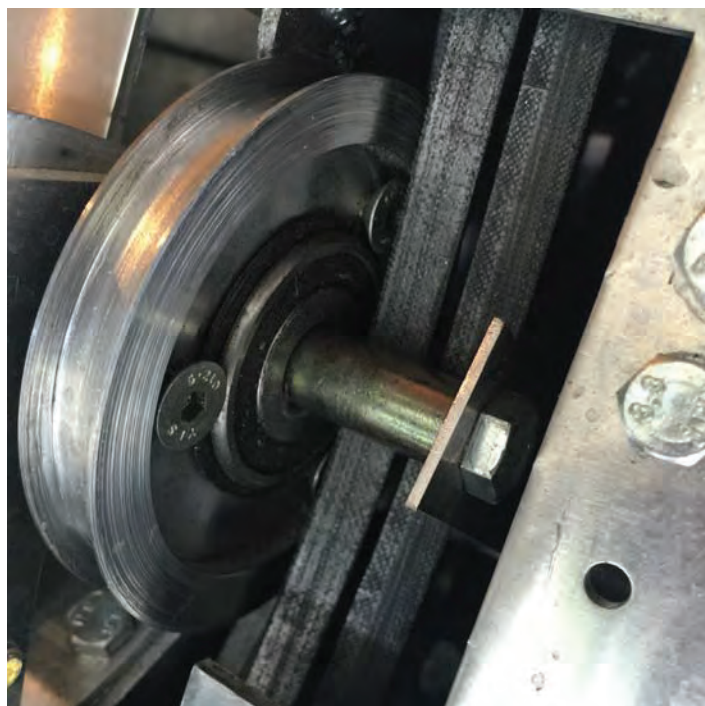


Avoid riding on 2 belts at ounce. The bar's pivot bolt can be shimmed with washers moving the bar left or right to align the pulley to the belts.

Attention! Aerate in each speed for 5 minutes to break-in belts.



Change handlebar height. Match the numbered hole setting for the braces and clutch rod. #1 is the lowest setting.



Slipping transmission ? Remove upper clutch rod swivel and shorten 2 turns to tighten slipping belts.



Save used knives for aerating when turf is stressed. Standard 1/8" thick Knife #317, 1/4" thick Knife #319 and 3/8" thick Knife #320



Tip machine back on a bench. Engage clutch to hold rotor. Hold knife and tighten to 40 foot pounds. Use a 9/16" ratchet wrench and a pliers.



For 1/2" Coring Knife, 1/4" Knife, and 3/8" Knife see special installation page to install a half set. 1/2" coring #321 is shown with extension #332, bolt #1054.



Model 21 requires 16 tines in full set 9 tines for a half set.

Model 29 requires 22 tines in a full set 12 in a half set.

Model 37 requires 28 in a full set 15 in a half set.

In deep thatch conditions Coring Knife part #321 will require tine extension # 332 with bolt #1054.

In heavy soil conditions a half set is used with 1/2 the tines in each shaft as pictured in the model 21 below. This set up would be used for the 1/4" thick #319 knives, the 3/8" thick #320 knives and the 1/2" Coring Knives #321.

Attention: If the machine is bouncing or stalling remove extensions and or raise the depth setting each hole change is 0.2"



Hand Transport
Move to storage.
Move to wash area.



Convert to Trailer
Tilt to wash.



Pull and turn side
latches to release.





Weight handle bars for service.



Lubricate three chains. Upper idler sprocket will adjust to tension roller chain.



Grease four tine shaft bearings with a small grease needle



Turn off fuel, find top dead center of piston, place blocking on floor, and tilt machine for service.

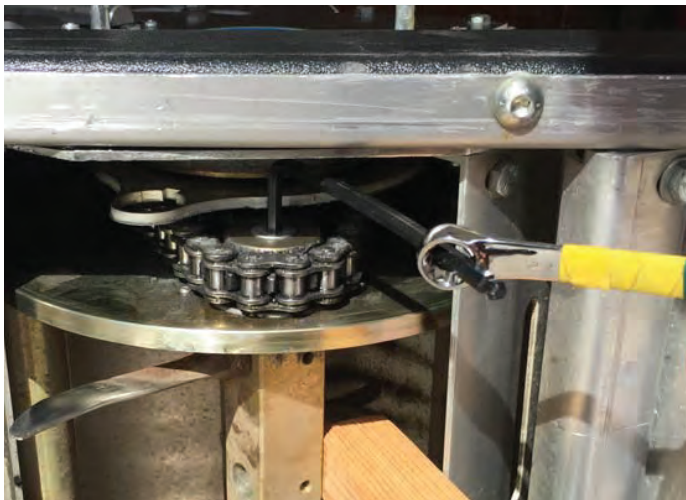




Loose Roller Tube: The roller ends are threaded.

Remove the outer axle nut with a 3/4" wrench, then loosen the inner axle nut.

Remove a M6 bolt from the bearing retainer and thread it into the roller end and tighten the roller end.

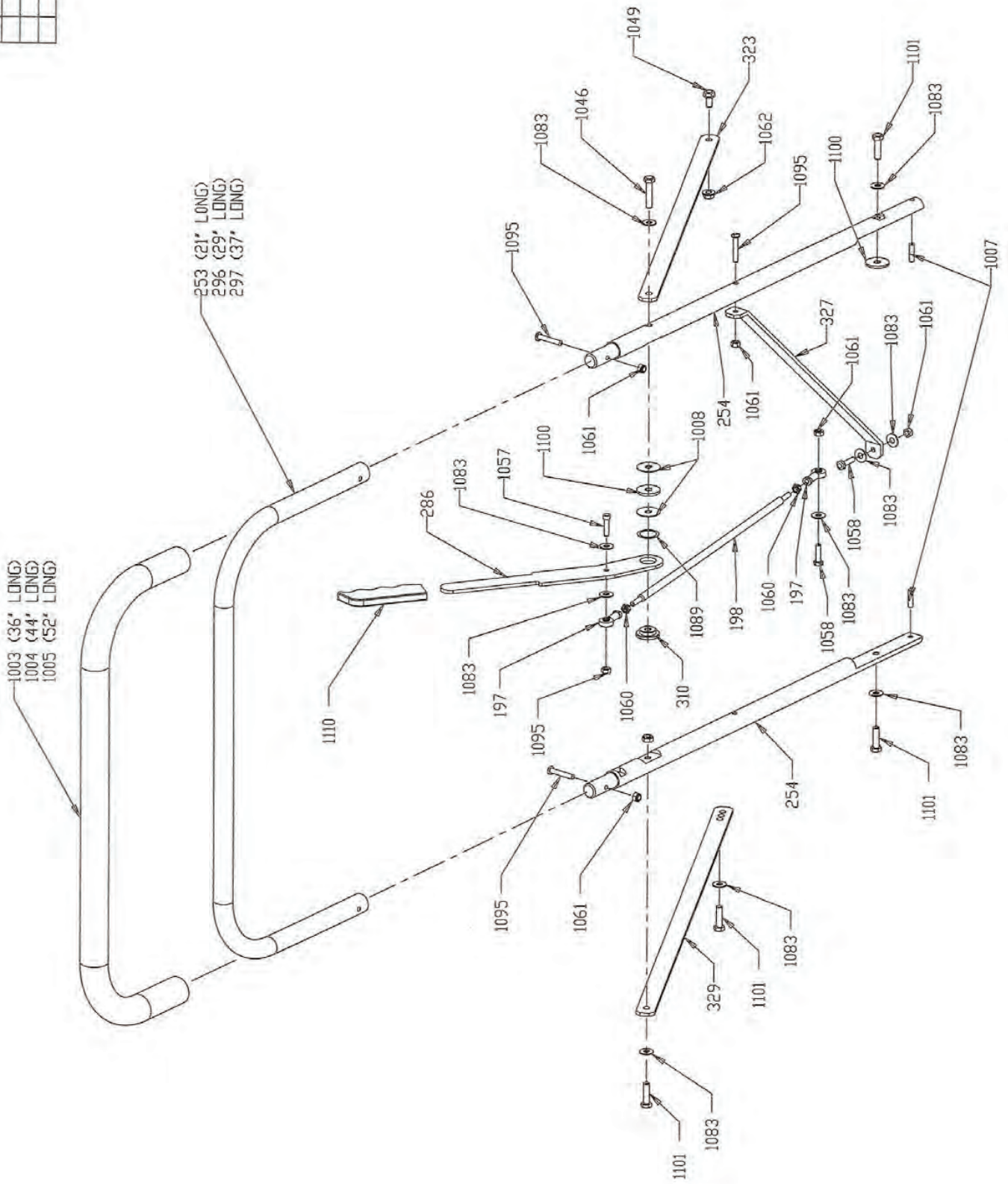


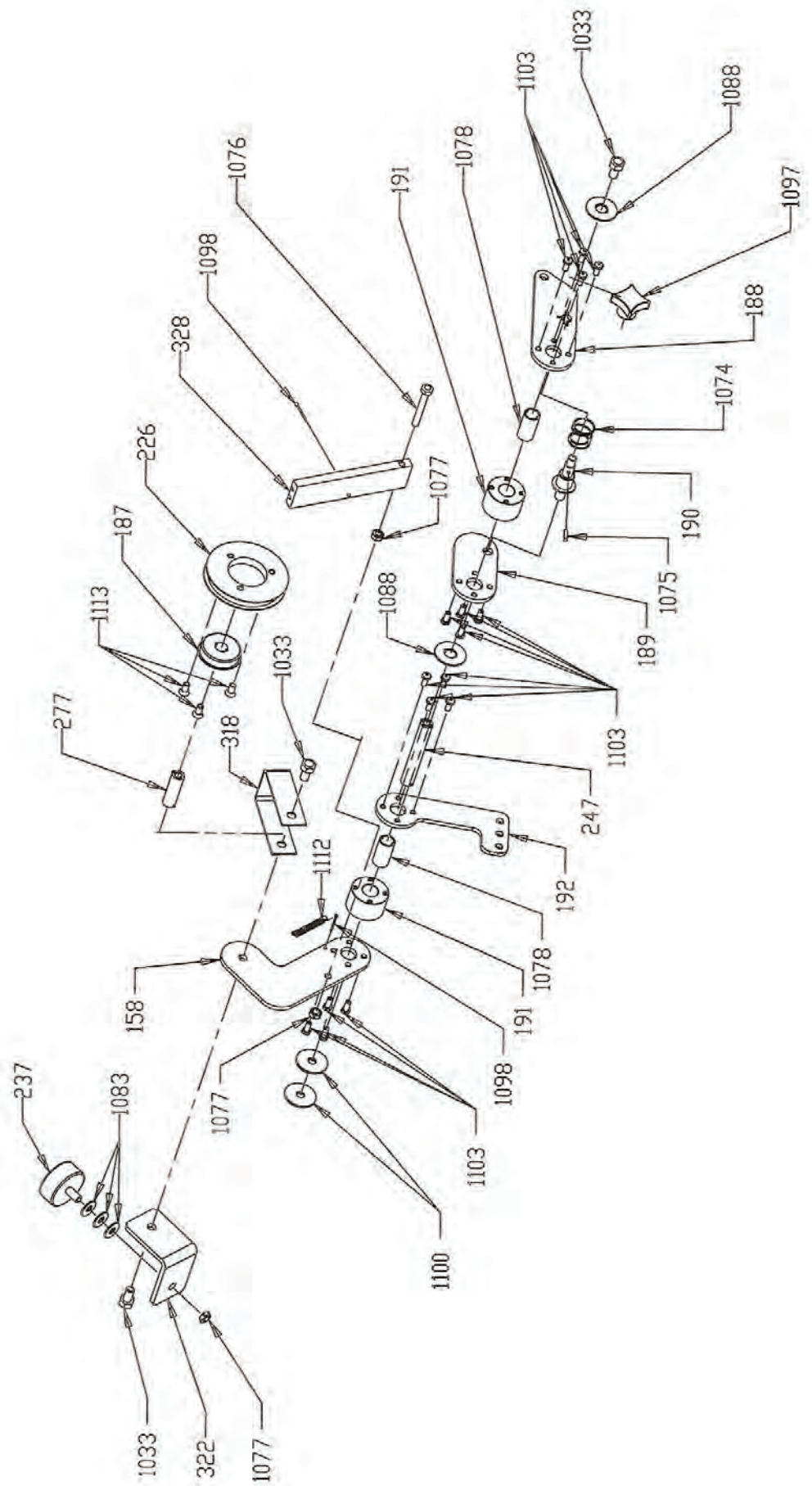
Screws on the ends of the 2 tine shafts should be checked. Loose screws should be removed and re-installed with thread locker to 35 foot pounds.

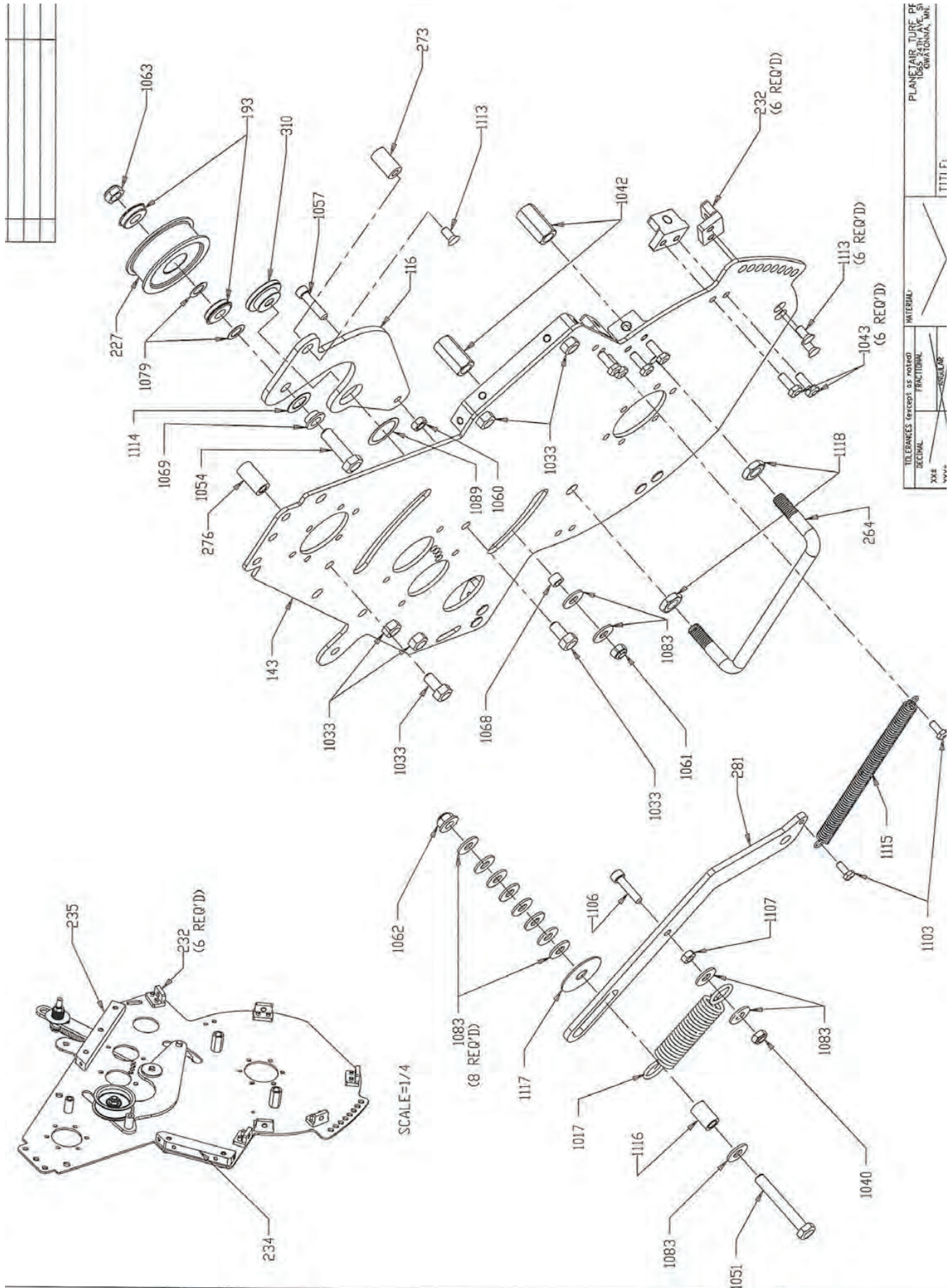


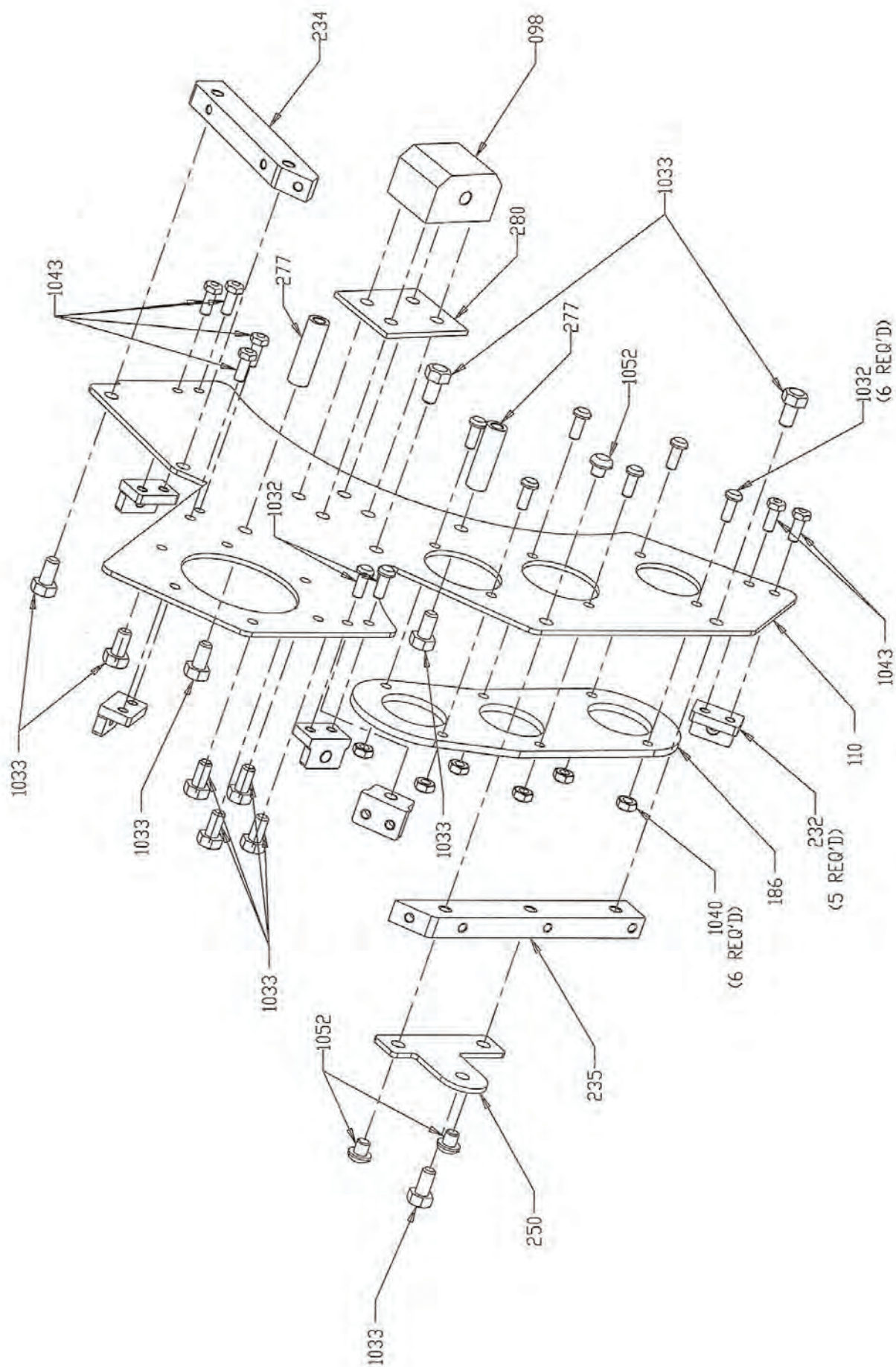
To remove frozen screws strike the washer with a cold chisel. To remove broken screws drill thru the end plate 3.9" down from the rotor center line with a LH drill bit.

LET			

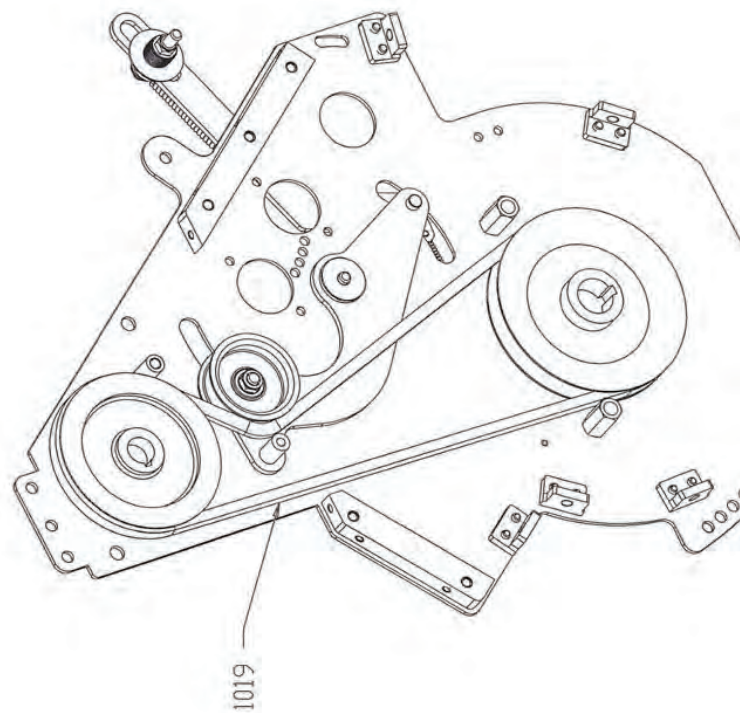
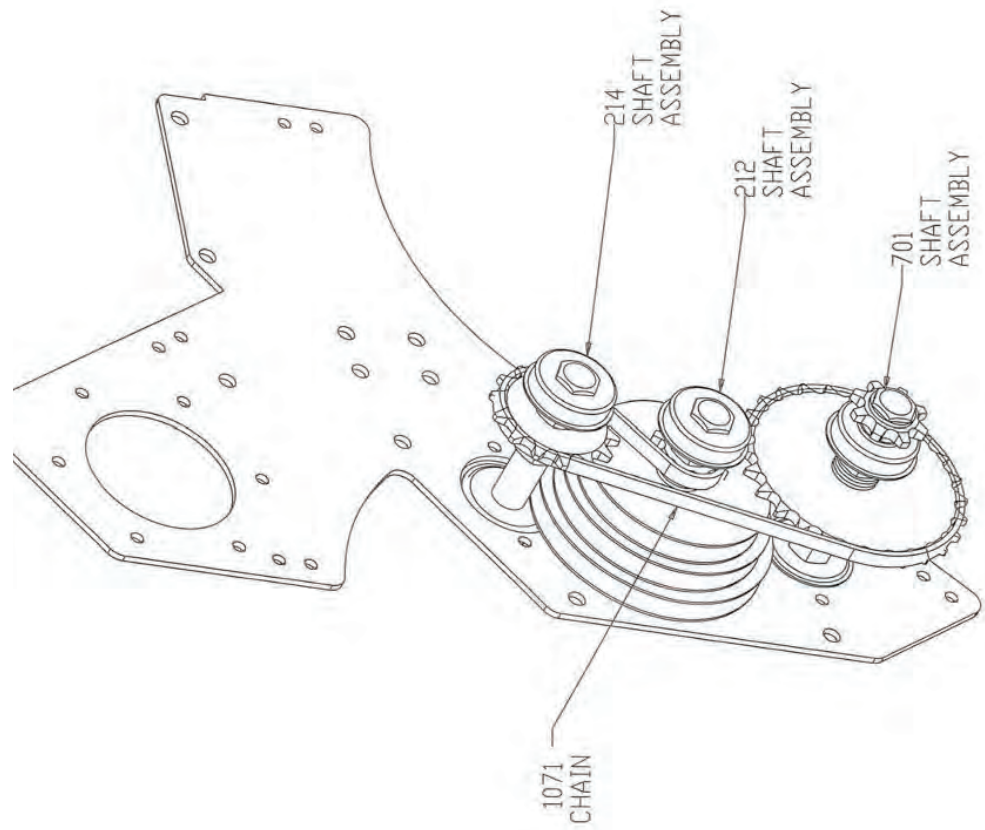
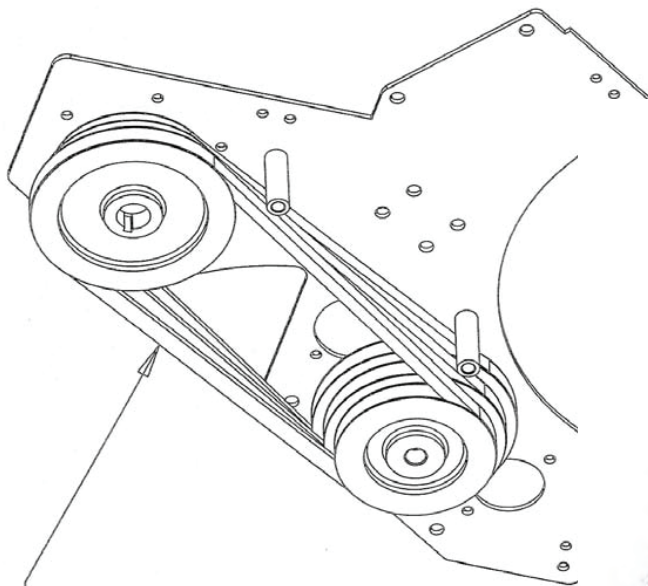


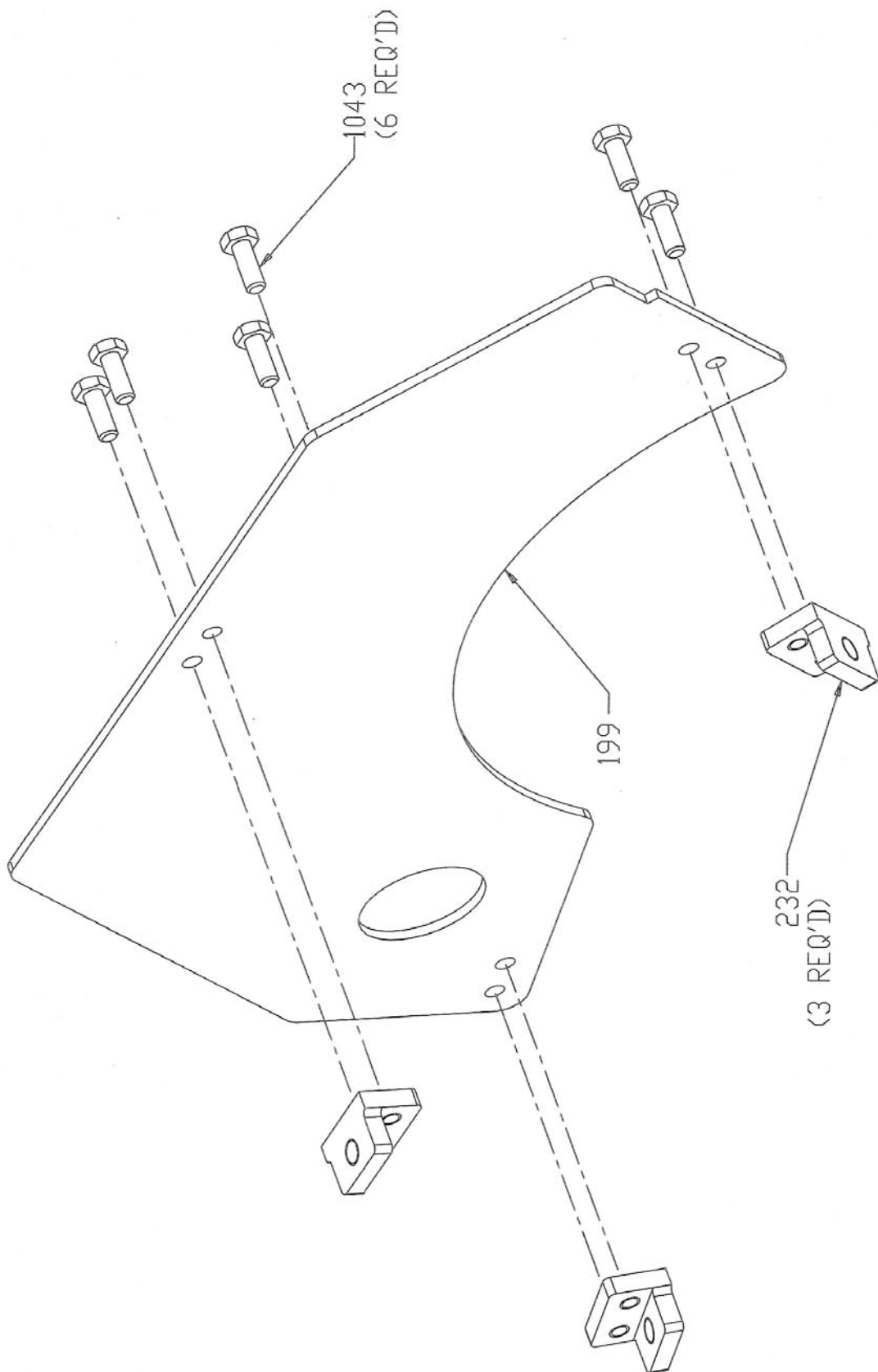


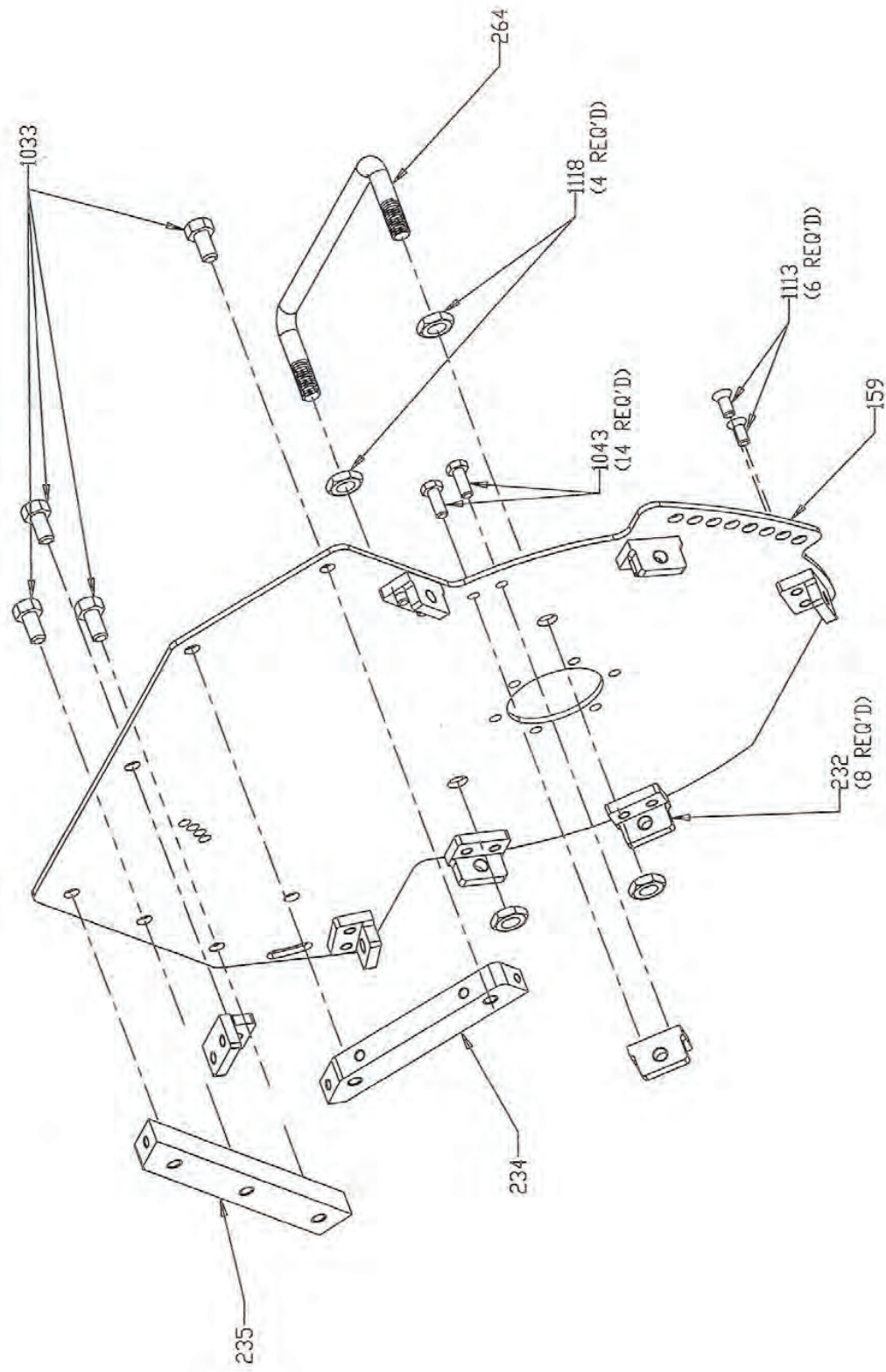


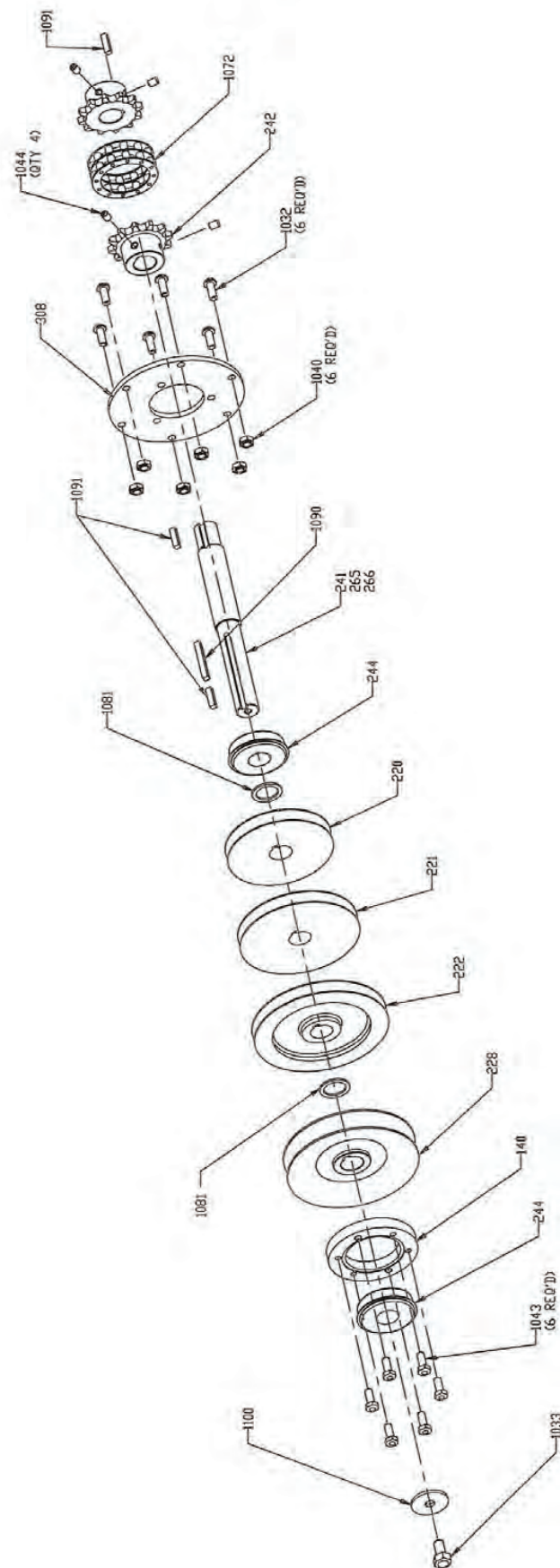


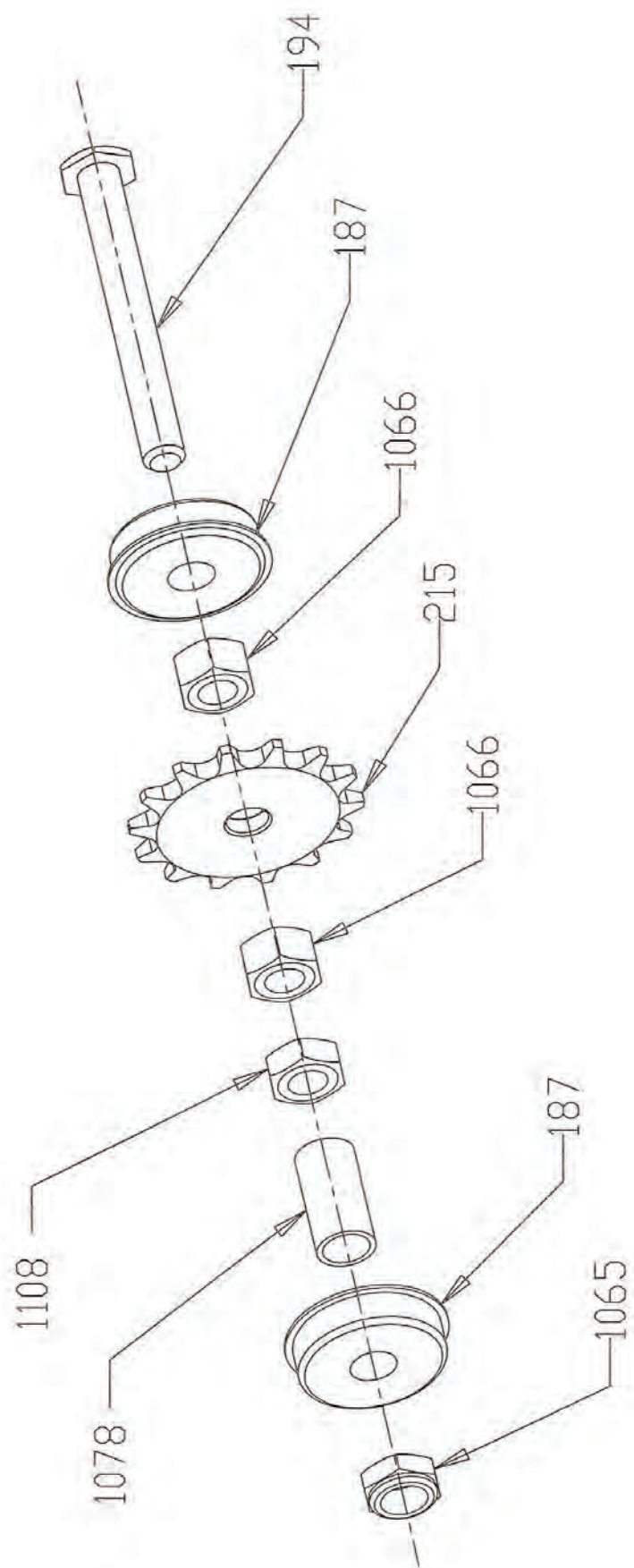
1020 (BELT)
3 REQ'D

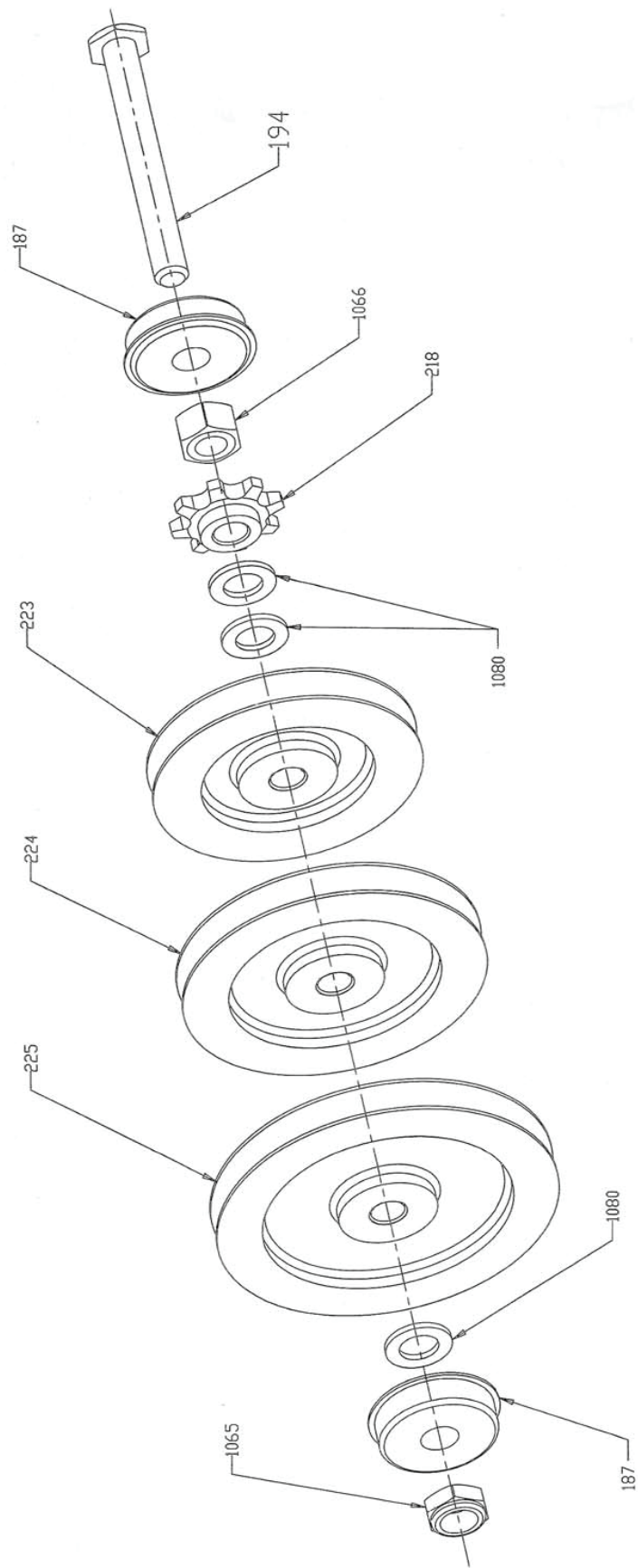


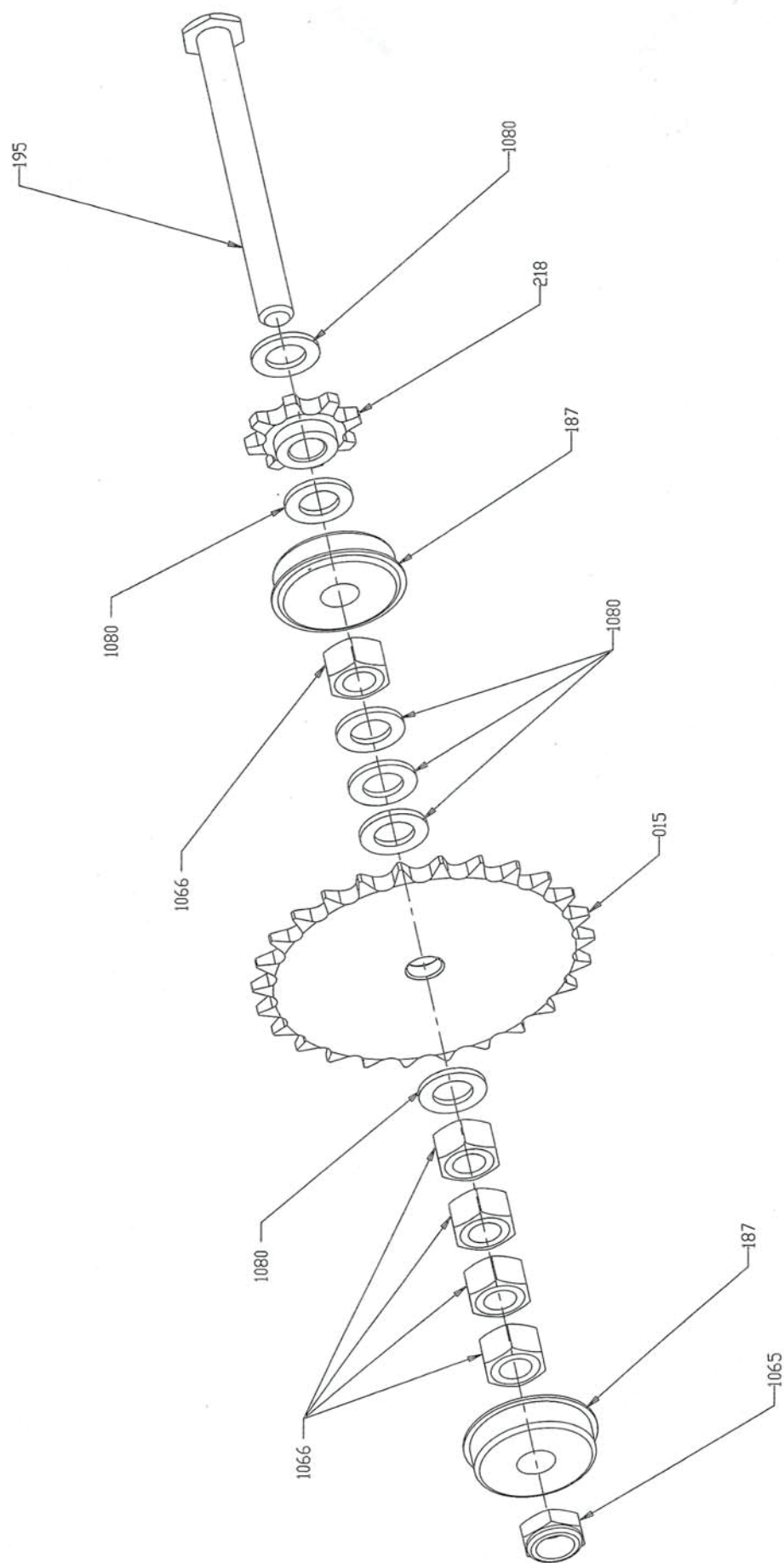


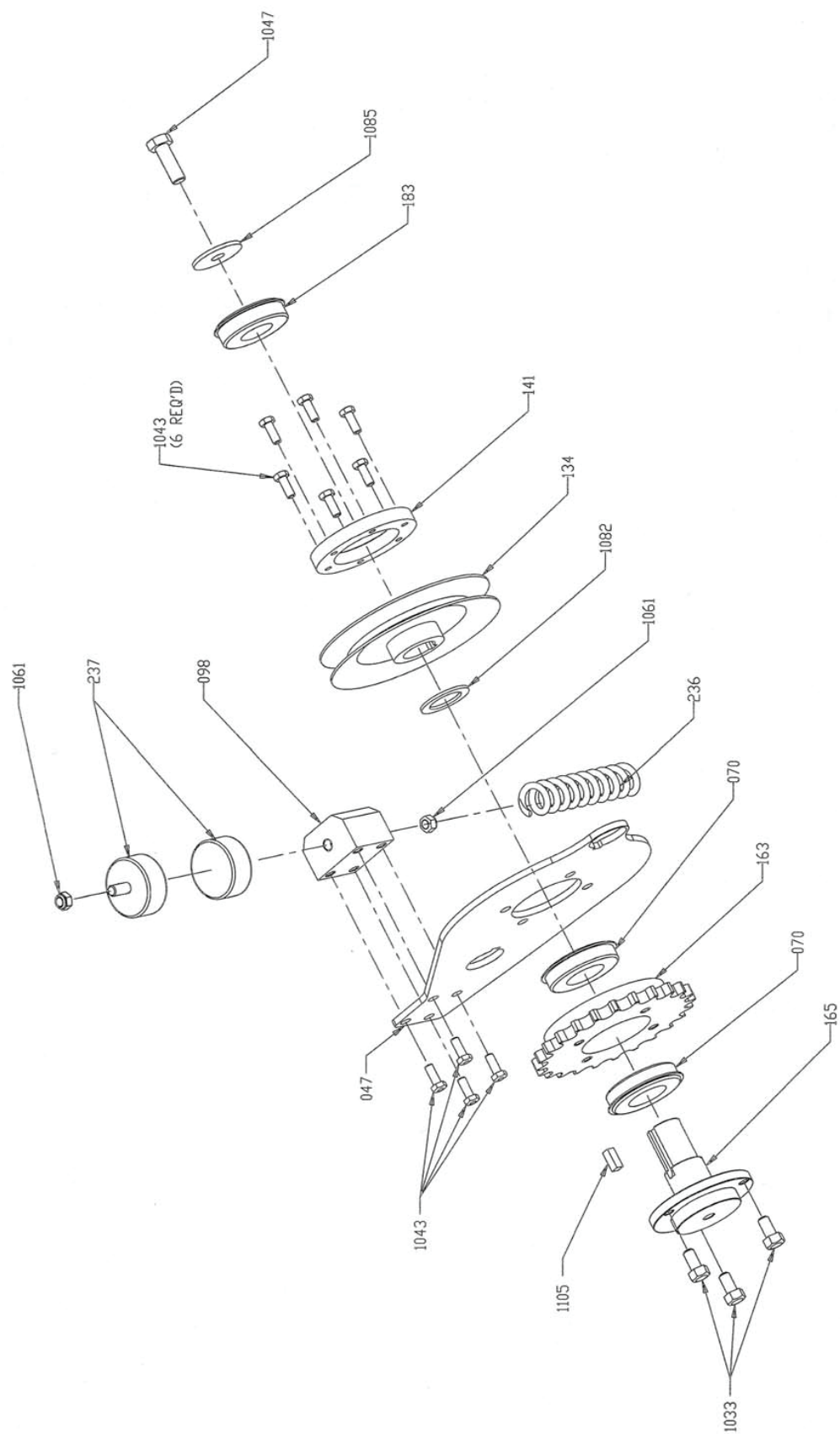


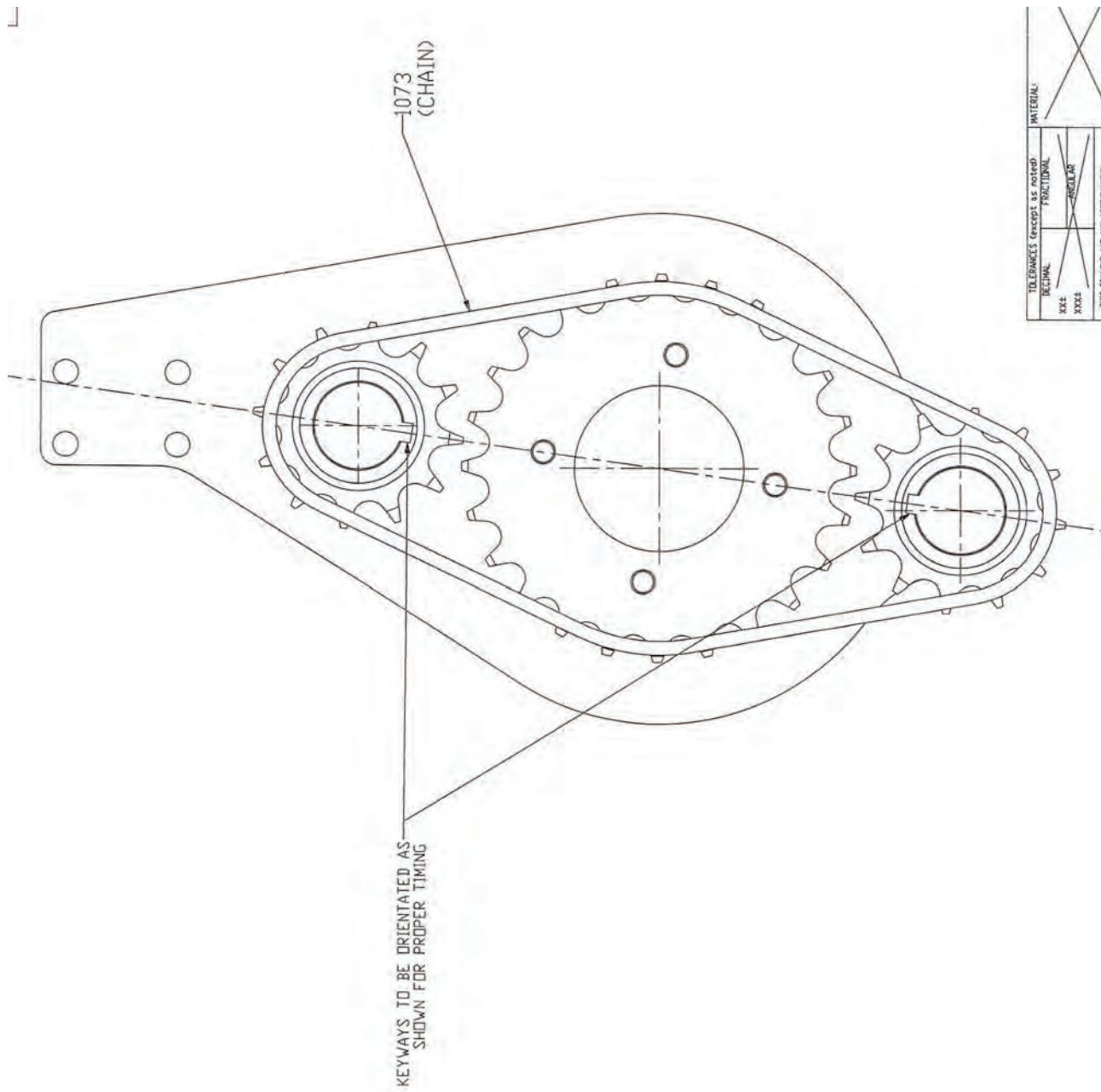


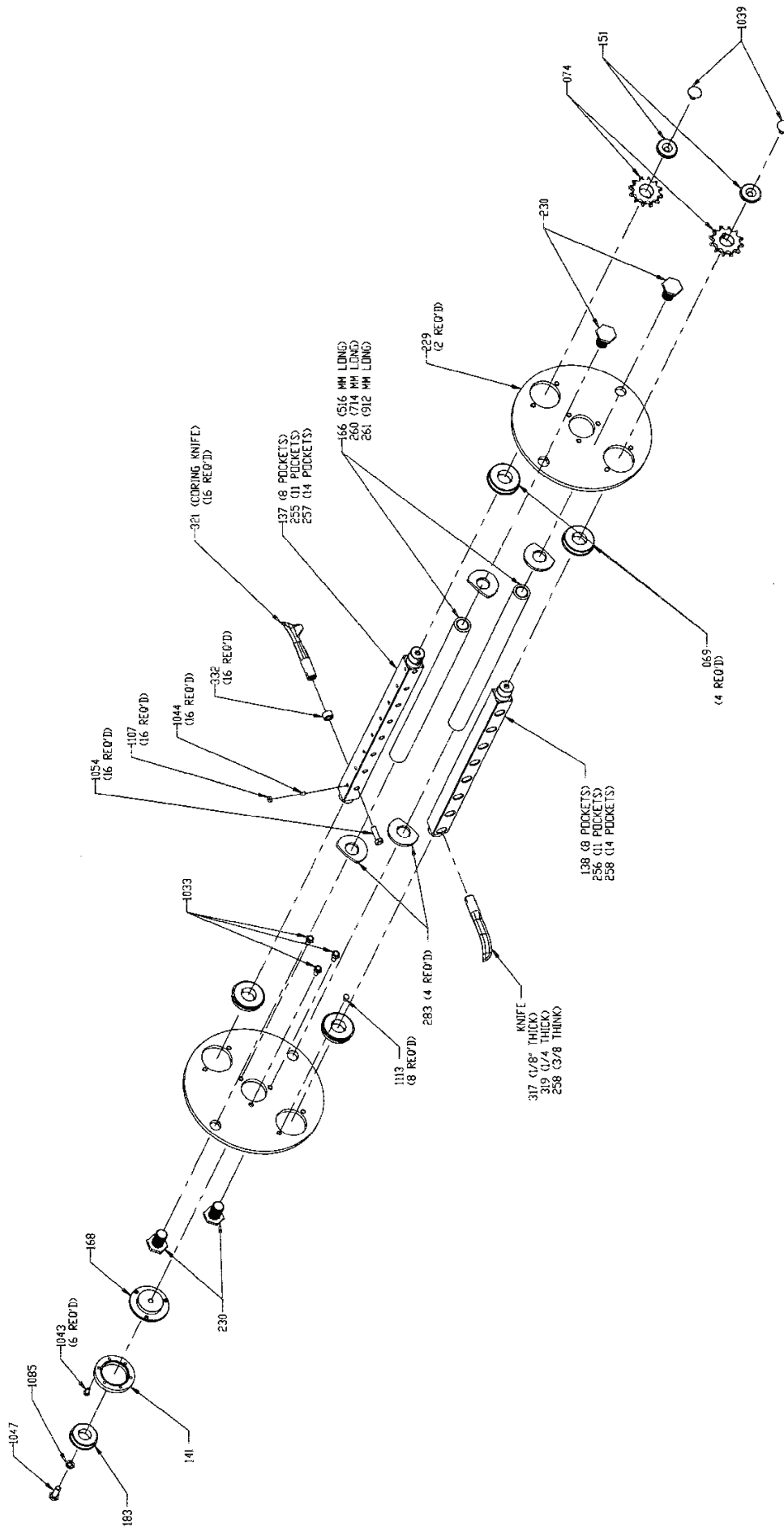




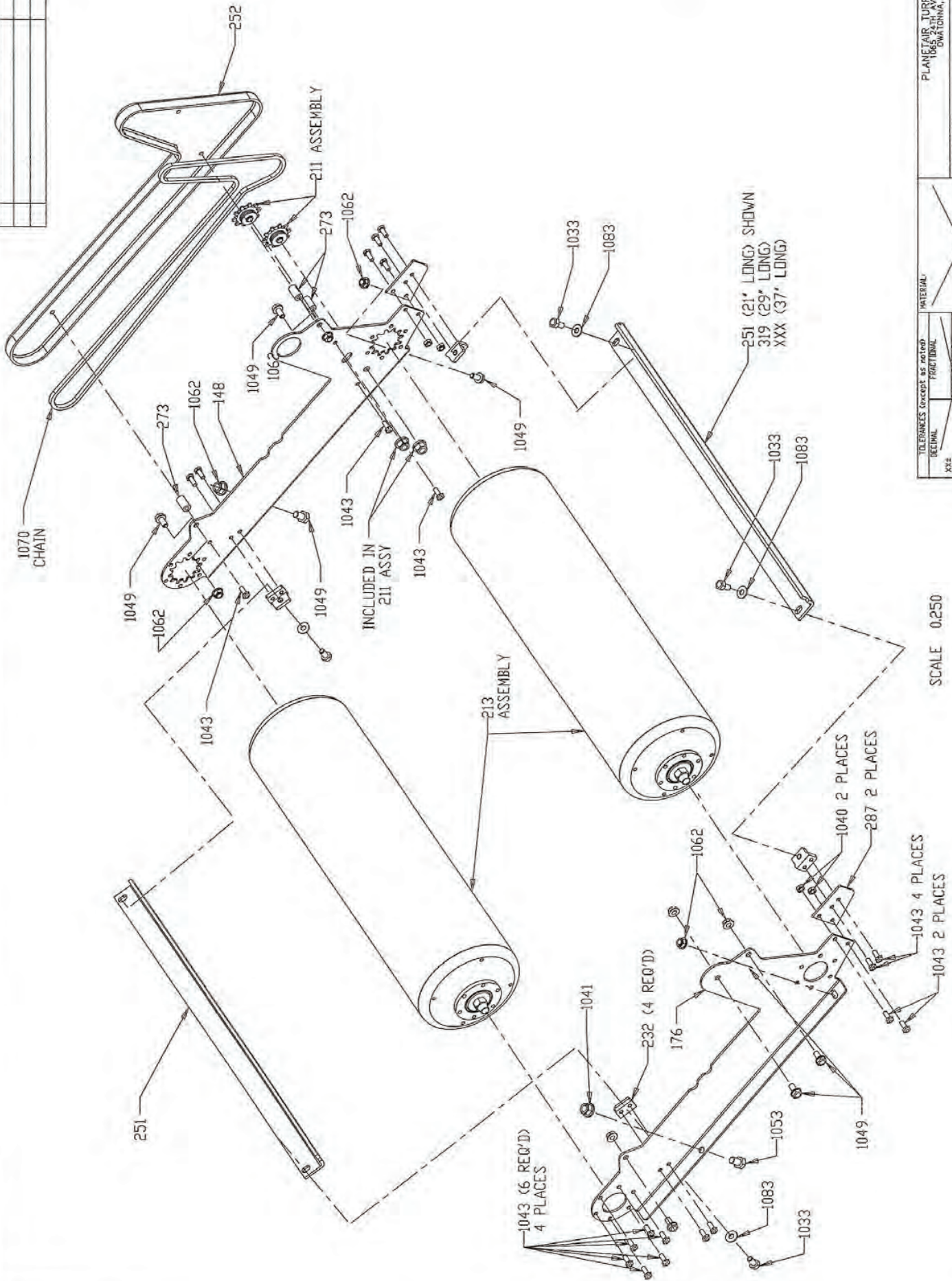








LET	REVISION	DATE	ECO



SCALE 0.250

TOLERANCES	UNLESS NOTED	AS NOTED	FRACTIONAL	DECIMAL	ANGULAR	TITLE	MATERIAL

PLANETAIR TURE PRODU
1065 24TH AVE SW
DUNELAND, MN 55566

